



# GMT MONTHLY MEMBERSHIP PROGRESS REPORT

Results as of: 7/31/2019

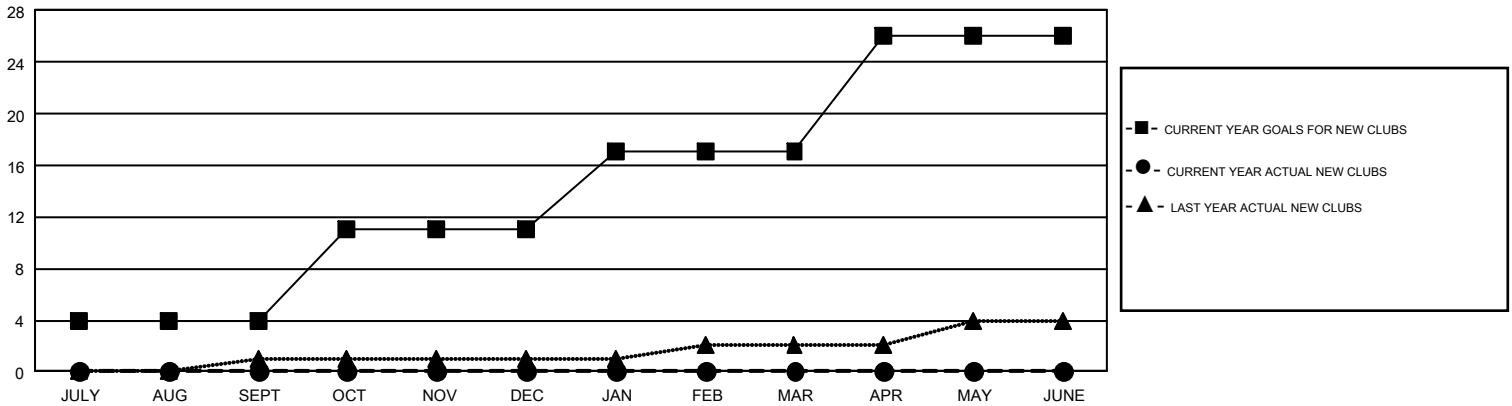
## GMT Constitutional Area 1, Group N

GMT: OPEN

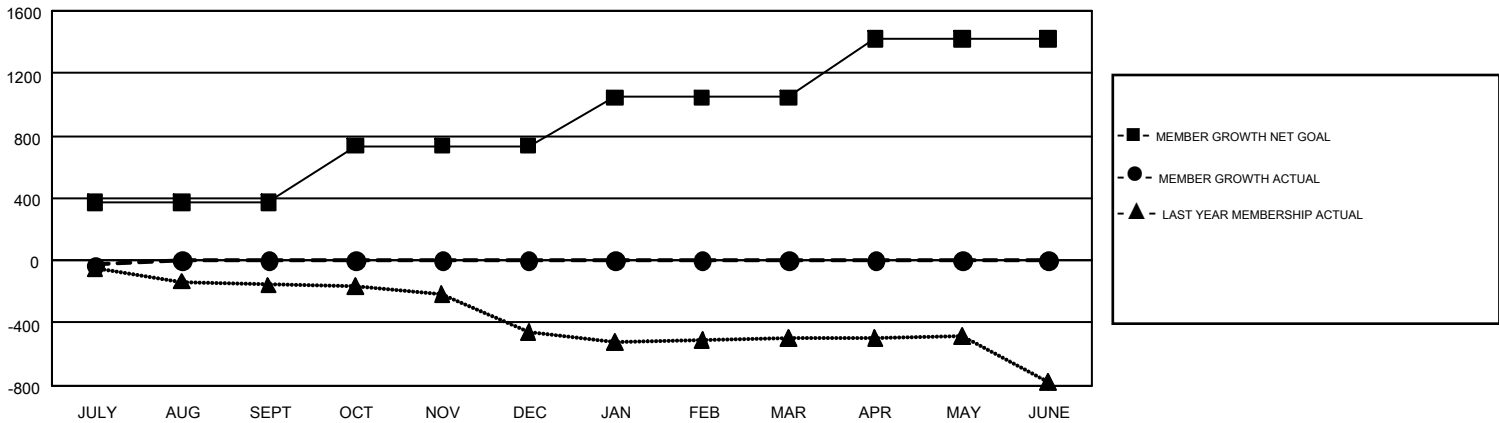
REPORT DOES NOT INCLUDE CLUBS IN UNDISTRICTED AREAS.

Clubs				Members			
RESULTS FOR 2019-2020				RESULTS FOR 2019-2020			
QUARTER	NEW CLUB GOAL	NEW CLUBS	DROPPED CLUBS	QUARTER	MEMBER GROWTH NET GOAL	MEMBER GROWTH ACTUAL	DROPPED MEMBERS ACTUAL (including transfers)
JULY/AUG/SEPT	4	0	1	JULY/AUG/SEPT	371	141	149
OCT/NOV/DEC	7	0	0	OCT/NOV/DEC	365	0	0
JAN/FEB/MAR	6	0	0	JAN/FEB/MAR	311	0	0
APR/MAY/JUNE	9	0	0	APR/MAY/JUNE	374	0	0

GOALS AND ACTUAL NEW CLUBS CUMULATIVE



GOALS AND ACTUAL MEMBERS CUMULATIVE



DROPPED CLUBS: 1	74 CLUBS OF 593 ADDED 1 OR MORE NEW MEMBERS	<b>GENDER DISTRIBUTION</b> MALE 9,295 (66.99%) FEMALE 4,581 (33.01%)
<b>DROPPED MEMBERS</b> DECEASED 19 CLUB CANCELLED 0 OTHER 129 <b>TOTAL 148</b>	<a href="#">CLICK HERE FOR CUMULATIVE MEMBERSHIP DATA</a>	TOTAL FAMILY UNIT MEMBERS 2,651 FAMILY MEMBERS PAYING HALF DUES 1,355